



GS Monthly Verification Report

Product : Encore_woofer_3020

Overall Result :

FAILED

GS SN : 18000037

VM SN : 18000037

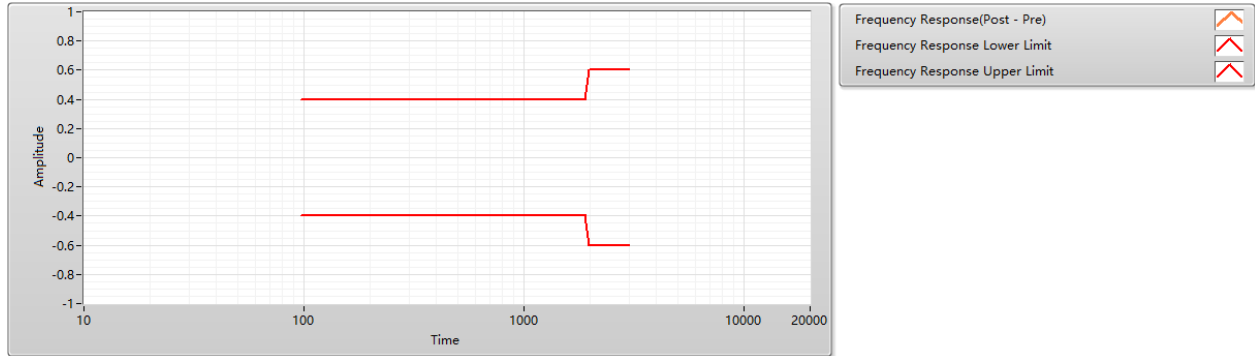


Date : 2022-08-30

GS Monthly Verification Report

FAILED

GS Verification Graphs



GS Verification Summary Data

Frequency	Frequency Response(Pre-Delta)	Frequency Response(Post-Delta)	Frequency Response(Post - Pre)
30.010	-9.213	-0.310	8.903
31.060	-9.279	-0.305	8.974
32.150	-9.336	-0.280	9.056
33.280	-9.388	-0.251	9.137
34.460	-9.443	-0.209	9.234
35.660	-9.494	-0.164	9.330
36.920	-9.548	-0.110	9.438
38.220	-9.602	-0.050	9.552
39.560	-9.650	-0.009	9.641
40.960	-9.695	0.018	9.713
42.400	-9.727	0.037	9.764
43.890	-9.761	0.062	9.823
45.430	-9.797	0.093	9.890
47.040	-9.834	0.120	9.954
48.680	-9.867	0.162	10.029
50.400	-9.899	0.219	10.118
52.180	-9.933	0.295	10.228
54.000	-9.949	0.345	10.294
55.910	-9.935	0.385	10.320
57.880	-9.891	0.405	10.296
59.920	-9.845	0.430	10.275
62.020	-9.891	0.538	10.429
64.200	-10.031	0.760	10.791
66.470	-10.054	0.836	10.890
68.800	-9.930	0.735	10.665
71.220	-9.669	0.448	10.117
73.730	-9.525	0.267	9.792
76.310	-9.501	0.223	9.724

GS Monthly Verification Report

Frequency	Frequency Response(Pre-Delta)	Frequency Response(Post-Delta)	Frequency Response(Post - Pre)
79.000	-9.469	0.200	9.669
81.790	-9.412	0.147	9.559
84.650	-9.364	0.095	9.459
87.640	-9.359	0.111	9.470
90.730	-9.387	0.164	9.551
93.910	-9.397	0.202	9.599
97.220	-9.357	0.176	9.533
100.650	-9.285	0.119	9.404
104.190	-9.221	0.073	9.294
107.840	-9.178	0.057	9.235
111.640	-9.145	0.053	9.198
115.580	-9.093	0.032	9.125
119.630	-9.035	-0.005	9.030
123.850	-9.033	-0.005	9.028
128.210	-9.021	-0.015	9.006
132.700	-9.020	-0.001	9.019
137.380	-8.980	-0.011	8.969
142.230	-8.906	-0.042	8.864
147.200	-8.869	-0.049	8.820
152.400	-8.806	-0.083	8.723
157.770	-8.785	-0.068	8.717
163.290	-8.776	-0.051	8.725
169.050	-8.807	-0.013	8.794
175.010	-8.827	-0.007	8.820
181.180	-8.831	-0.012	8.819
187.530	-8.795	-0.035	8.760
194.140	-8.761	-0.043	8.718
200.990	-8.713	-0.065	8.648
208.020	-8.682	-0.078	8.604
215.360	-8.657	-0.080	8.577
222.950	-8.631	-0.082	8.549
230.760	-8.610	-0.079	8.531
238.890	-8.581	-0.084	8.497
247.320	-8.559	-0.090	8.469
255.970	-8.535	-0.101	8.434
265.000	-8.504	-0.128	8.376
274.350	-8.468	-0.154	8.314
283.950	-8.436	-0.172	8.264
293.960	-8.418	-0.173	8.245
304.330	-8.425	-0.167	8.258
315.060	-8.441	-0.161	8.280
326.090	-8.447	-0.159	8.288
337.590	-8.433	-0.161	8.272
349.490	-8.416	-0.163	8.253
361.730	-8.407	-0.163	8.244
374.480	-8.403	-0.157	8.246
387.690	-8.397	-0.149	8.248
401.260	-8.391	-0.138	8.253
415.410	-8.386	-0.129	8.257
430.060	-8.377	-0.127	8.250
445.110	-8.362	-0.129	8.233
460.810	-8.341	-0.133	8.208
477.060	-8.326	-0.129	8.197
493.760	-8.315	-0.118	8.197
511.170	-8.321	-0.096	8.225
529.200	-8.345	-0.070	8.275
547.860	-8.371	-0.053	8.318
567.040	-8.397	-0.043	8.354

GS Monthly Verification Report

Frequency	Frequency Response(Pre-Delta)	Frequency Response(Post-Delta)	Frequency Response(Post - Pre)
587.030	-8.420	-0.039	8.381
607.730	-8.452	-0.028	8.424
629.010	-8.483	-0.017	8.466
651.190	-8.499	-0.027	8.472
674.150	-8.484	-0.076	8.408
697.750	-8.451	-0.153	8.298
722.360	-8.409	-0.241	8.168
747.830	-8.379	-0.316	8.063
774.010	-8.372	-0.373	7.999
801.300	-8.398	-0.405	7.993
829.560	-8.459	-0.409	8.050
858.600	-8.567	-0.375	8.192
888.880	-8.702	-0.297	8.405
920.220	-8.826	-0.199	8.627
952.430	-8.909	-0.107	8.802
986.020	-8.946	-0.051	8.895
1020.790	-8.965	-0.021	8.944
1056.790	-8.986	0.001	8.987
1093.780	-9.017	0.024	9.041
1132.350	-9.061	0.046	9.107
1172.280	-9.114	0.065	9.179
1213.320	-9.169	0.080	9.249
1256.110	-9.218	0.099	9.317
1300.400	-9.250	0.121	9.371
1345.920	-9.263	0.149	9.412
1393.390	-9.258	0.175	9.433
1442.520	-9.241	0.192	9.433
1493.020	-9.228	0.202	9.430
1545.670	-9.224	0.214	9.438
1600.170	-9.221	0.227	9.448
1656.190	-9.216	0.226	9.442
1714.590	-9.218	0.224	9.442
1775.060	-9.241	0.234	9.475
1837.650	-9.283	0.280	9.563
1901.980	-9.310	0.321	9.631
1969.050	-9.279	0.301	9.580
2038.490	-9.160	0.188	9.348
2109.840	-8.955	0.003	8.958
2184.240	-8.668	-0.232	8.436
2261.270	-8.230	-0.610	7.620
2340.430	-7.597	-1.193	6.404
2422.960	-7.150	-1.591	5.559
2508.400	-7.056	-1.628	5.428
2596.210	-7.402	-1.222	6.180
2687.760	-7.793	-0.789	7.004
2782.540	-7.966	-0.578	7.388
2879.950	-7.935	-0.555	7.380
2981.500	-7.814	-0.615	7.199
3086.640	-7.695	-0.660	7.035
3195.490	-7.617	-0.669	6.948
3307.350	-7.569	-0.646	6.923
3423.980	-7.519	-0.643	6.876
3544.720	-7.445	-0.667	6.778
3668.810	-7.399	-0.651	6.748
3798.180	-7.445	-0.542	6.903
3932.120	-7.559	-0.376	7.183
4069.770	-7.825	-0.082	7.743
4213.280	-8.178	0.279	8.457

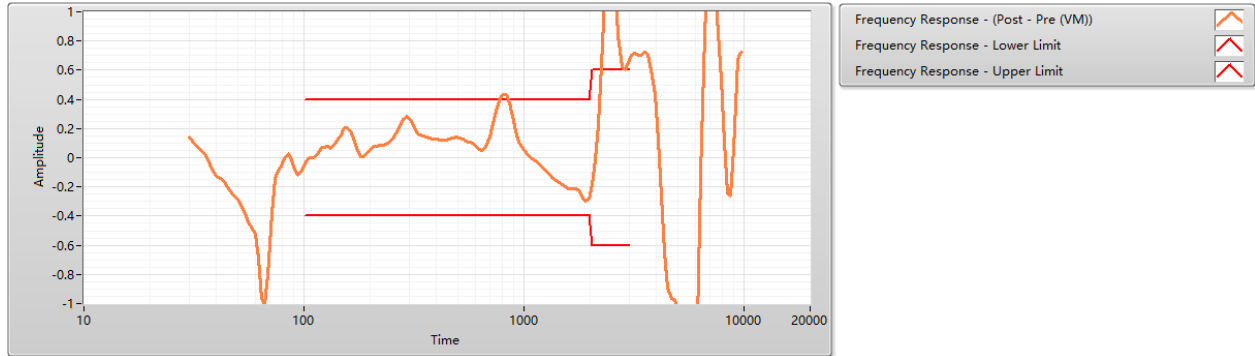
GS Monthly Verification Report

Frequency	Frequency Response(Pre-Delta)	Frequency Response(Post-Delta)	Frequency Response(Post - Pre)
4361.860	-8.558	0.648	9.206
4514.550	-8.855	0.890	9.745
4673.750	-9.009	0.961	9.970
4838.560	-9.121	0.974	10.095
5007.940	-9.282	1.040	10.322
5184.540	-9.513	1.191	10.704
5367.370	-9.834	1.434	11.268
5556.640	-10.227	1.728	11.955
5751.150	-10.568	1.957	12.525
5953.960	-10.546	1.832	12.378
6163.920	-9.918	1.153	11.071
6379.690	-8.880	0.136	9.016
6604.660	-7.837	-0.826	7.011
6837.570	-7.166	-1.361	5.805
7076.920	-6.858	-1.474	5.384
7326.480	-6.754	-1.336	5.418
7584.840	-6.902	-0.959	5.943
7850.350	-7.205	-0.537	6.668
8127.180	-7.656	-0.085	7.571
8413.780	-8.109	0.276	8.385
8708.310	-8.242	0.313	8.555
9015.400	-7.934	-0.007	7.927
9333.310	-7.251	-0.621	6.630
9662.440	-6.944	-0.677	6.267

GS Monthly Verification Report

FAILED

Verification Master Graphs



Verification Master Summary Data

Frequency	Frequency Response - Pre-VM	Frequency Response - Post-VM	Frequency Response - (Post - Pre (VM))
30.01	104.35	104.49	0.14
31.06	104.63	104.74	0.11
32.15	104.89	104.98	0.09
33.28	105.13	105.20	0.07
34.46	105.39	105.44	0.05
35.66	105.61	105.63	0.02
36.92	105.83	105.80	-0.03
38.22	106.00	105.92	-0.08
39.56	106.14	106.02	-0.11
40.96	106.26	106.13	-0.13
42.40	106.35	106.20	-0.15
43.89	106.42	106.25	-0.18
45.43	106.47	106.26	-0.21
47.04	106.48	106.25	-0.24
48.68	106.46	106.20	-0.26
50.40	106.39	106.10	-0.30
52.18	106.27	105.93	-0.34
54.00	106.06	105.67	-0.39
55.91	105.69	105.25	-0.44
57.88	105.20	104.72	-0.48
59.92	104.72	104.20	-0.52
62.02	104.19	103.51	-0.69
64.20	103.62	102.66	-0.96
66.47	103.02	102.01	-1.01
68.80	102.66	101.86	-0.80

GS Monthly Verification Report

Frequency	Frequency Response - Pre-VM	Frequency Response - Post-VM	Frequency Response - (Post - Pre (VM))
71.22	102.61	102.23	-0.38
73.73	102.75	102.61	-0.14
76.31	102.87	102.78	-0.09
79.00	102.90	102.85	-0.06
81.79	102.86	102.86	-0.01
84.65	102.70	102.73	0.03
87.64	102.45	102.44	-0.01
90.73	102.17	102.08	-0.08
93.91	101.89	101.77	-0.12
97.22	101.58	101.48	-0.10
100.65	101.23	101.19	-0.04
104.19	100.88	100.88	-0.00
107.84	100.53	100.54	0.00
111.64	100.20	100.20	-0.00
115.58	99.89	99.91	0.02
119.63	99.65	99.72	0.07
123.85	99.61	99.68	0.07
128.21	99.55	99.63	0.08
132.70	99.41	99.47	0.06
137.38	99.13	99.21	0.08
142.23	98.75	98.88	0.13
147.20	98.48	98.64	0.16
152.40	98.18	98.38	0.21
157.77	97.95	98.16	0.21
163.29	97.78	97.96	0.18
169.05	97.69	97.80	0.11
175.01	97.56	97.61	0.05
181.18	97.35	97.36	0.00
187.53	97.03	97.04	0.01
194.14	96.72	96.74	0.03
200.99	96.40	96.46	0.06
208.02	96.14	96.22	0.08
215.36	95.89	95.97	0.08
222.95	95.63	95.71	0.08
230.76	95.39	95.47	0.09
238.89	95.13	95.23	0.10
247.32	94.97	95.09	0.12
255.97	94.90	95.04	0.14
265.00	94.90	95.08	0.18
274.35	94.91	95.13	0.22
283.95	94.91	95.17	0.26
293.96	94.88	95.17	0.28
304.33	94.81	95.07	0.26
315.06	94.61	94.83	0.22
326.09	94.33	94.50	0.18
337.59	94.03	94.18	0.16
349.49	93.81	93.97	0.15
361.73	93.67	93.81	0.15
374.48	93.54	93.68	0.14
387.69	93.40	93.53	0.13
401.26	93.26	93.39	0.13
415.41	93.12	93.24	0.12
430.06	92.98	93.10	0.12
445.11	92.86	92.97	0.12
460.81	92.75	92.88	0.13

GS Monthly Verification Report

Frequency	Frequency Response - Pre-VM	Frequency Response - Post-VM	Frequency Response - (Post - Pre (VM))
477.06	92.68	92.82	0.14
493.76	92.63	92.77	0.14
511.17	92.64	92.78	0.14
529.20	92.73	92.85	0.12
547.86	92.86	92.98	0.12
567.04	93.01	93.12	0.11
587.03	93.17	93.26	0.10
607.73	93.37	93.45	0.08
629.01	93.64	93.70	0.06
651.19	93.98	94.02	0.05
674.15	94.33	94.41	0.08
697.75	94.68	94.82	0.14
722.36	95.04	95.27	0.23
747.83	95.42	95.74	0.32
774.01	95.80	96.19	0.39
801.30	96.21	96.64	0.43
829.56	96.71	97.14	0.43
858.60	97.33	97.71	0.38
888.88	97.97	98.25	0.28
920.22	98.42	98.61	0.18
952.43	98.62	98.73	0.10
986.02	98.66	98.72	0.06
1020.79	98.69	98.73	0.04
1056.79	98.78	98.80	0.02
1093.78	98.96	98.95	-0.00
1132.35	99.22	99.20	-0.02
1172.28	99.56	99.51	-0.04
1213.32	99.89	99.83	-0.06
1256.11	100.15	100.07	-0.08
1300.40	100.28	100.17	-0.11
1345.92	100.24	100.11	-0.13
1393.39	100.08	99.92	-0.16
1442.52	99.84	99.67	-0.17
1493.02	99.62	99.43	-0.18
1545.67	99.44	99.24	-0.20
1600.17	99.33	99.13	-0.21
1656.19	99.29	99.08	-0.21
1714.59	99.29	99.08	-0.21
1775.06	99.31	99.09	-0.22
1837.65	99.34	99.08	-0.26
1901.98	99.34	99.04	-0.30
1969.05	99.23	98.95	-0.28
2038.49	98.92	98.73	-0.19
2109.84	98.34	98.33	-0.01
2184.24	97.55	97.78	0.23
2261.27	96.66	97.29	0.63
2340.43	95.53	96.76	1.24
2422.96	94.44	96.09	1.64
2508.40	93.58	95.26	1.68
2596.21	93.24	94.51	1.27
2687.76	93.22	94.06	0.84
2782.54	93.07	93.70	0.63
2879.95	92.56	93.16	0.60
2981.50	91.73	92.39	0.65
3086.64	90.81	91.51	0.70

GS Monthly Verification Report

Frequency	Frequency Response - Pre-VM	Frequency Response - Post-VM	Frequency Response - (Post - Pre (VM))
3195.49	89.94	90.66	0.71
3307.35	89.22	89.92	0.70
3423.98	88.59	89.29	0.70
3544.72	87.90	88.62	0.72
3668.81	87.13	87.84	0.71
3798.18	86.56	87.17	0.60
3932.12	86.18	86.61	0.43
4069.77	86.14	86.26	0.12
4213.28	86.40	86.14	-0.26
4361.86	87.00	86.35	-0.65
4514.55	88.05	87.15	-0.90
4673.75	89.25	88.29	-0.96
4838.56	90.48	89.51	-0.97
5007.94	91.66	90.63	-1.03
5184.54	92.75	91.56	-1.18
5367.37	93.92	92.49	-1.43
5556.64	95.37	93.65	-1.72
5751.15	96.93	94.99	-1.95
5953.96	98.06	96.26	-1.81
6163.92	97.88	96.75	-1.12
6379.69	96.39	96.28	-0.11
6604.66	94.31	95.16	0.84
6837.57	92.23	93.60	1.37
7076.92	90.19	91.67	1.48
7326.48	87.85	89.19	1.34
7584.84	85.87	86.83	0.96
7850.35	84.98	85.52	0.54
8127.18	85.37	85.48	0.11
8413.78	86.53	86.29	-0.24
8708.31	87.36	87.09	-0.26
9015.40	87.00	87.06	0.06
9333.31	85.60	86.27	0.67
9662.44	83.02	83.74	0.72